



Wintergreen Gardens | | Newport | PO30 2GN

£1,100 Per month



Merriebank
LETTINGS

Wintergreen Gardens | Newport | PO30 2GN £1,100 Per month

Situated in the popular Winter Green Gardens area of Newport, this attractive semi-detached home offers modern, low-maintenance living in a highly convenient location. The property features two generous bedrooms, a contemporary family bathroom, and the added benefit of a ground-floor cloakroom, making it well suited to professionals, couples, or a small family.

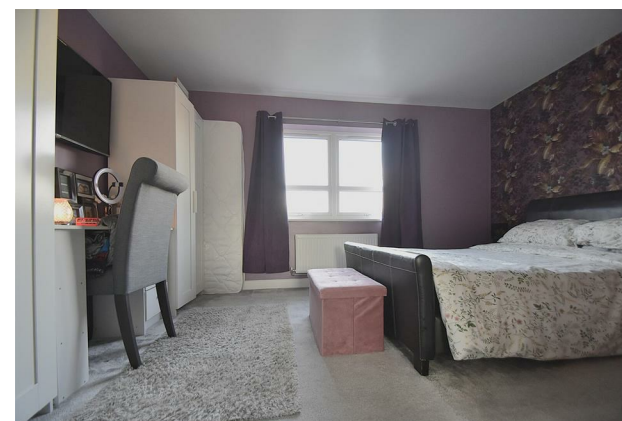
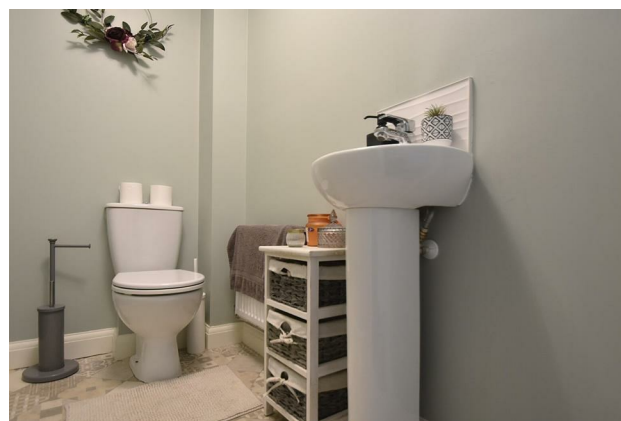
Constructed in recent years, the house forms part of the sought-after St Georges Gate development and is designed with energy efficiency in mind. The interior layout is bright and practical, with well-planned living spaces that create a comfortable and welcoming environment throughout.

Externally, the property benefits from off-road parking and a private rear garden, providing a pleasant outdoor space ideal for relaxing or entertaining.

Available from mid to late January 2026, the property is offered at £950 per calendar month with a deposit of £950. The home has an EPC rating of B and falls within council tax band C. Situated in a vibrant community, this property benefits from its proximity to local amenities, parks, and transport links, making it an excellent choice for those who appreciate both tranquillity and accessibility.

- 2 spacious bedrooms
- Extra downstairs W/C
- Newly built house
- Ideal for small families
- Double Glazing and Central Heating
- Located in Newport & Close to local amenities
- 2 Parking spaces on drive
- Viewing recommended
- Private enclosed garden

Council Tax Band C | EPC Rating B



Energy Efficiency Rating		
	Current	Potential
Very energy efficient - lower running costs		
(92 plus) A		
(81-91) B	81	
(69-80) C		
(55-68) D		
(39-54) E		
(21-38) F		
(1-20) G		
Not energy efficient - higher running costs		
England & Wales		EU Directive 2002/91/EC 